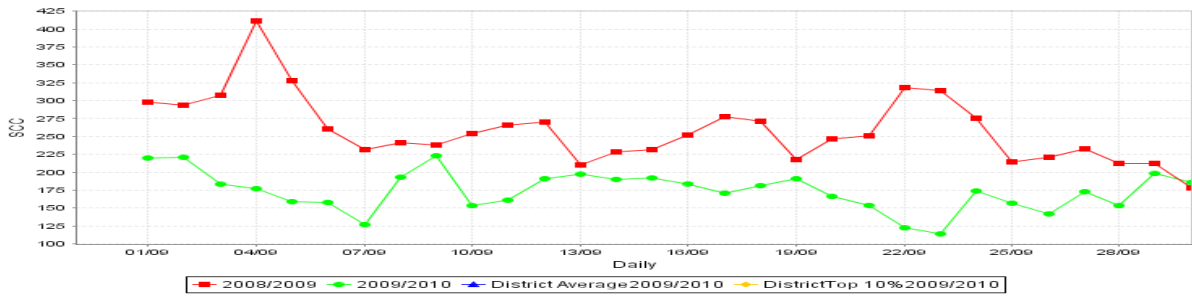


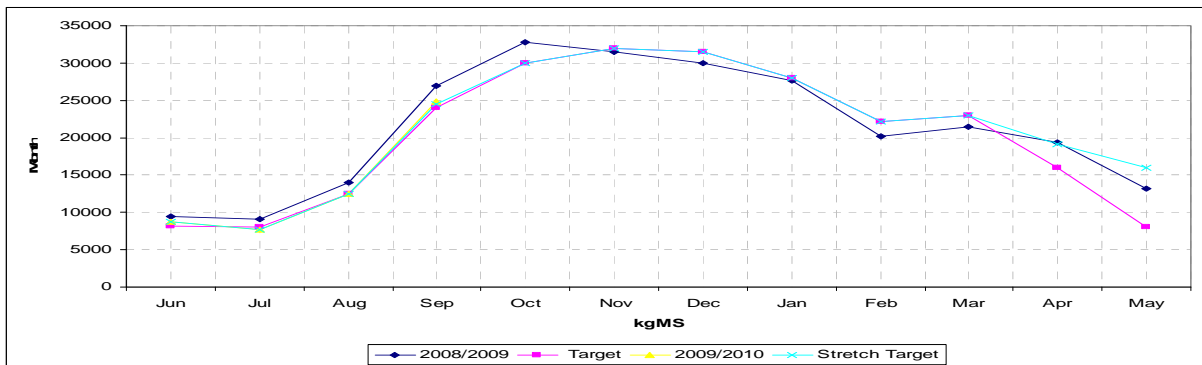
Taratahi Dairy Unit

Farm Data September 2009	Target	10/09/2009	20/09/2009	30/09/2009
Available Grazing Area	190	181	174	174
Area shut up or cropped	0	26.6	34	34
Total Effective area	190	208	208	208
Total Cows milked into Vat		451	486	538
<i>Twice a Day</i>		451	486	538
<i>Once a day</i>				
Treatment mob total		31	49	30
<i>Mastitis, Lamé, Colostrum, other</i>		12,1,18,0	30,1,16,2	20,3,7,0
Springers on farm		98	120	67
Dry cows on farm		75	0	3
R2's on farm		29	29	33
R1's on farm		30	30	30
Other on farm				
Total Cows on Farm		655	655	638
Dry cows off farm				
R2's off farm				
R1's off farm		159	159	159
Other off farm				
Total Cows off Farm		0	0	0
Culls over period		7	0	16
Culls to date		117	117	133
Deaths over period		1	0	0
Deaths to date		7	7	7
Total Stock Numbers		655	655	639
Peak cow numbers	615 target			
Condition Score	4.5 (PSM)		4.2	
Kgs N applied (for period)		2220	3276	1064
Kgs N applied/ha to date (Total Eff)		49	57	66
Rainfall over period (mm)		7	10.5	35
Rainfall to date (mm) 1/6/09		242.5	253	288

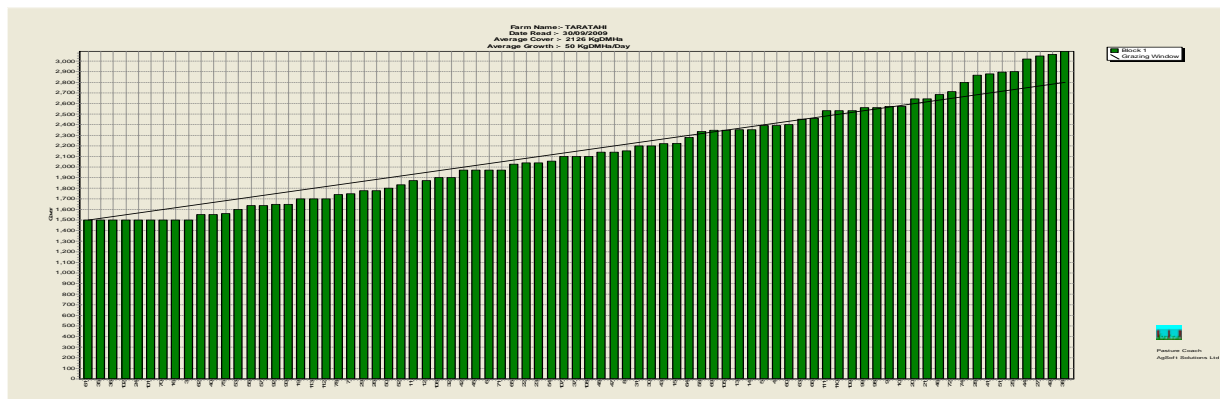
Farm Production	Target	10/09/2009	20/09/2009	30/09/2009
kgMS/day (av for period)		738	825	920
kgMS/cow/day		1.76	1.88 (HT)	1.87
kgMS/ha/day (Total ha)		4.18	4.34	4.86
SCC (10 day average)		180	180	158



	Target	10/09/2009	20/09/2009	31/09/2009
KgMs/cow to date (615 Target Peak cow)		58.99	72.42	87.48
kgMS/ha to date (190ha)		190.96	234.43	283.17
KgMs for Month	24040	7370	15630	24891
KgMs for season to date		36284	44543	53804
kgMS target for season to date		35110	43614	52740
Season to date v's target		+3%	+2%	+2%
Fertility (3wk submission, 6 wk non-return rate, Incalf rate)				



	Target	10/09/2009	20/09/2009	31/09/2009
Growth Rate	35	39	46	50
Pasture Cover Actual	2200	2163	2117	2126
Area Grazed /ha/day		4.6	5.0	5.9
Pasture Residual	1500	1600	1550	1550
Rotation Speed	120	39	34	29



	Target	10/09/2009	20/09/2009	30/09/2009
Total Feed Ration (Milkers)	16	16	16	16
Pasture	12	16	16	16
Grass Silage				
Baleage				
Maize Silage	4			
Other				

Total Feed Ration (Drys)	12	12		
Pasture	6	5		
Grass Silage	6	7		
Baleage				
Maize Silage				
Other				

Total Feed Ration (Springers)	10	12	10	13
Pasture	5	5	4	10
Grass Silage	5	7	6	3
Baleage				
Maize Silage				
Other				

Total Supplement on hand (kgDM)		283,027	270,227	250,227
Grass Silage		130,742	110,742	90,742
Baleage			30 bales(12/9)	7200
Maize Silage		140,000	140,000	240,000
Hay		10,125	10,125	10,125
Straw		2,160	2,160	2,160
Other (Hay conv)		250 bales	250 bales	250 bales
Other (Straw conv)		300 bales	300 bales	300bales

Total Supplement at Run off. (kgDM)	N/A	N/A	N/A	N/A
Grass Silage				
Baleage				
Maize Silage				
Hay				
Straw				
Other				
Other				