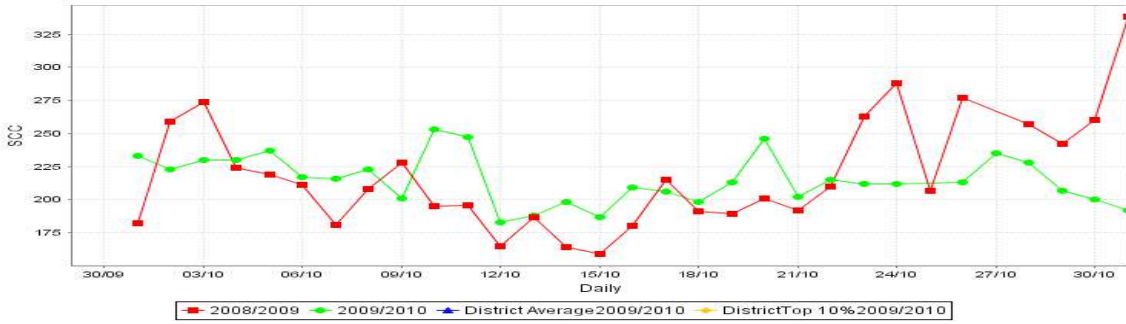


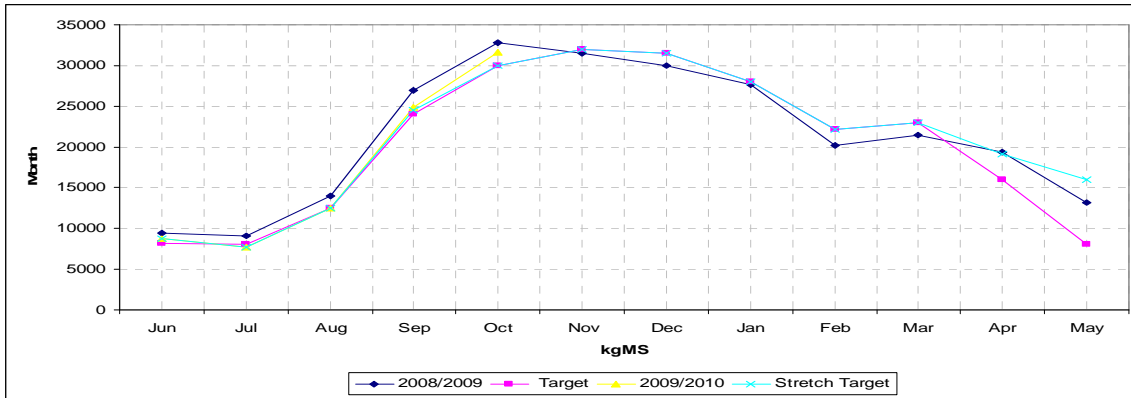
## Taratahi Dairy Unit

| <b>Farm Data October 2009</b>               | Target     | 10/10/2009 | 20/10/2009 | 30/10/2009 |
|---|------------|------------|------------|------------|
| <b>Available Grazing Area</b>               | 190        | 172        | 172        | 177        |
| <b>Area shut up or cropped</b>              | 0          | 36         | 36         | 31         |
| <b>Total Effective area</b>                 | 190        | 208        | 208        | 208        |
| <b>Total Cows milked into Vat</b>           |            | 569        | 590        | 600        |
| <i>Twice a Day</i>                          |            | 569        | 590        | 600        |
| <i>Once a day</i>                           |            |            |            |            |
| <b>Treatment mob total</b>                  |            | 27         | 20         | 18         |
| <i>Mastitis, Lamé, Colostrum, other</i>     |            | 12,12,3,0  | 7,9,4,10   | 7,8,3,0    |
| <b>Springers on farm</b>                    |            | 28         | 17         | 5          |
| <b>Dry cows on farm</b>                     |            | 14         | 4          | 6          |
| <b>R2's on farm</b>                         |            | 33         | 33         | 33         |
| <b>R1's on farm</b>                         |            | 30         | 30         | 30         |
| <b>Other on farm</b>                        |            |            |            |            |
| <b>Total Cows on Farm</b>                   |            | 638        | 631        | 629        |
| <b>Dry cows off farm</b>                    |            |            |            |            |
| <b>R2's off farm</b>                        |            |            |            |            |
| <b>R1's off farm</b>                        |            | 159        | 159        | 159        |
| <b>Other off farm</b>                       |            |            |            |            |
| <b>Total Cows off Farm</b>                  |            | 0          | 0          | 0          |
| <b>Culls over period</b>                    |            | 0          | 6          | 0          |
| <b>Culls to date</b>                        |            | 133        | 139        | 139        |
| <b>Deaths over period</b>                   |            | 1          | 1          | 2          |
| <b>Deaths to date</b>                       |            | 8          | 9          | 11         |
| <b>Total Stock Numbers</b>                  |            | 638        | 631        | 629        |
| <b>Peak cow numbers</b>                     | 615 target |            |            |            |
| <b>Condition Score</b>                      | 4.5 (PSM)  | 3.85       |            |            |
| <b>Kgs N applied (for period)</b>           |            | 0          | 994        | 1028       |
| <b>Kgs N applied/ha to date (Total Eff)</b> |            | 66         | 71         | 80         |
| <b>Rainfall over period (mm)</b>            |            | 39         | 39.5       | 48         |
| <b>414.5</b>                                |            | 327        | 366.5      | 414.5      |

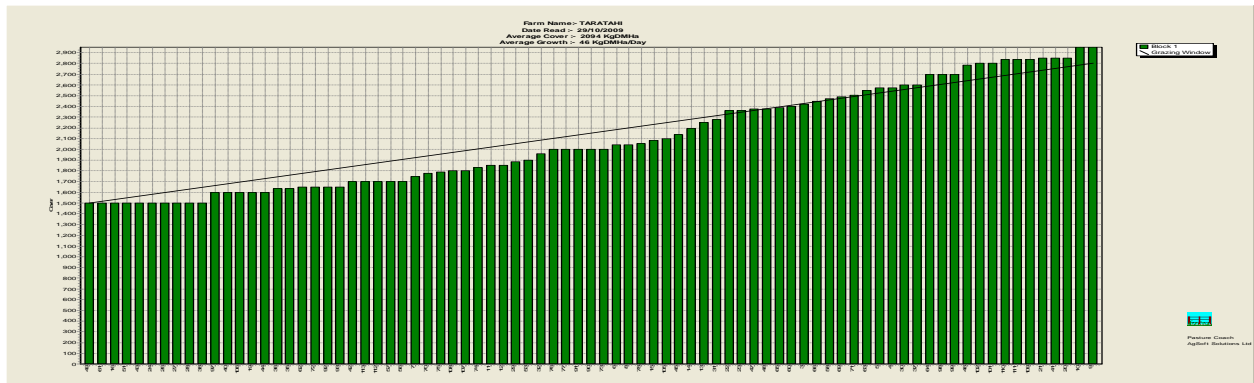
| <b>Farm Production</b>          | Target | 10/10/2009 | 20/10/2009 | 30/10/2009 |
|---------------------------------|--------|------------|------------|------------|
| <b>kgMS/day (av for period)</b> |        | 1036       | 1077       | 1047       |
| <b>kgMS/cow/day</b>             |        | 1.86       | 1.82       | 1.78       |
| <b>kgMS/ha/day (Total ha)</b>   |        | 4.98       | 5.17       | 5.15       |
| <b>SCC (10 day average)</b>     |        | 222        | 203        | 215        |



|  | Target | 10/10/2009        | 20/10/2009 | 31/10/2009 |
|--|--------|-------------------|------------|------------|
| <b>KgMs/cow to date (615 Target Peak cow)</b>                        |        | 104.34            | 121.86     | 138.90     |
| <b>kgMS/ha to date (190ha)</b>                                       |        | 337.74            | 394.47     | 449.60     |
| <b>KgMs for Month</b>  | 30000  | 10368             | 21145      | 31621      |
| <b>KgMs for season to date</b>                                       |        | 64172             | 74950      | 85425      |
| <b>kgMS target for season to date</b>                                |        | 61803             | 72173      | 82740      |
| <b>Season to date v's target</b>                                     |        | +3%               | +3%        | +4%        |
| <b>Fertility (3wk submission, 6 wk non-return rate, Incalf rate)</b> |        | 34 ovsync<br>9/10 |            |            |



|                             | Target | 10/10/2009 | 20/10/2009 | 31/10/2009 |
|-----------------------------|--------|------------|------------|------------|
| <b>Growth Rate</b>          | 35     | 54         | 54         | 46         |
| <b>Pasture Cover Actual</b> | 2100   | 2154       | 2152       | 2094       |
| <b>Area Grazed /ha/day</b>  |        | 6.9        | 6          | 6.2        |
| <b>Pasture Residual</b>     | 1500   | 1650       | 1650       | 1500       |
| <b>Rotation Speed</b>       | 120    | 26         | 28         | 28         |



|                                    | Target | 10/10/2009 | 20/10/2009 | 30/10/2009 |
|------------------------------------|--------|------------|------------|------------|
| <b>Total Feed Ration (Milkers)</b> | 16     | 16         | 16         | 16         |
| <b>Pasture</b>                     | 16     | 16         | 16         | 16         |
| <b>Grass Silage</b>                |        |            |            |            |
| <b>Baleage</b>                     |        |            |            |            |
| <b>Maize Silage</b>                |        |            |            |            |
| <b>Other</b>                       |        |            |            |            |

|                                 |    |  |  |  |
|---------------------------------|----|--|--|--|
| <b>Total Feed Ration (Drys)</b> | 12 |  |  |  |
| <b>Pasture</b>                  | 6  |  |  |  |
| <b>Grass Silage</b>             | 6  |  |  |  |
| <b>Baleage</b>                  |    |  |  |  |
| <b>Maize Silage</b>             |    |  |  |  |
| <b>Other</b>                    |    |  |  |  |

|                                      |    |    |         |         |
|--------------------------------------|----|----|---------|---------|
| <b>Total Feed Ration (Springers)</b> | 12 | 13 | 12      | 12      |
| <b>Pasture</b>                       | 4  | 3  | 4       | 4       |
| <b>Grass Silage</b>                  | 8  | 10 |         |         |
| <b>Baleage</b>                       |    |    |         |         |
| <b>Maize Silage</b>                  |    |    |         |         |
| <b>Other</b>                         |    |    | 8 (hay) | 8 (hay) |

|  |  |           |           |                      |
|--|--|-----------|-----------|----------------------|
| <b>Total Supplement on hand (kgDM)</b> |  | 243,027   | 243,027   | 243,027              |
| <b>Grass Silage</b>                    |  | 83,542    | 83,542    | 83,542               |
| <b>Baleage</b>                         |  | 7,200     | 7,200     | 7,200 +<br>438 bales |
| <b>Maize Silage</b>                    |  | 240,000   | 240,000   | 240,000              |
| <b>Hay</b>                             |  | 10,125    | 10,125    | 10,125               |
| <b>Straw</b>                           |  | 2,160     | 2,160     | 2,160                |
| <b>Other (Hay conv)</b>                |  | 250 bales | 240 bales | 230 bales            |
| <b>Other (Straw conv)</b>              |  | 300 bales | 300 bales | 300 bales            |

|  |     |     |     |     |
|--|-----|-----|-----|-----|
| <b>Total Supplement at Run off. (kgDM)</b> | N/A | N/A | N/A | N/A |
| <b>Grass Silage</b>                        |     |     |     |     |
| <b>Baleage</b>                             |     |     |     |     |
| <b>Maize Silage</b>                        |     |     |     |     |
| <b>Hay</b>                                 |     |     |     |     |
| <b>Straw</b>                               |     |     |     |     |
| <b>Other</b>                               |     |     |     |     |
| <b>Other</b>                               |     |     |     |     |