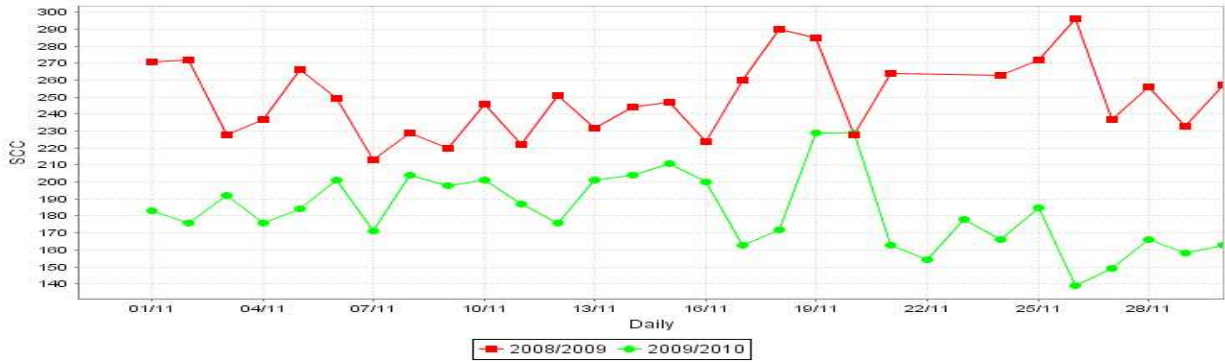


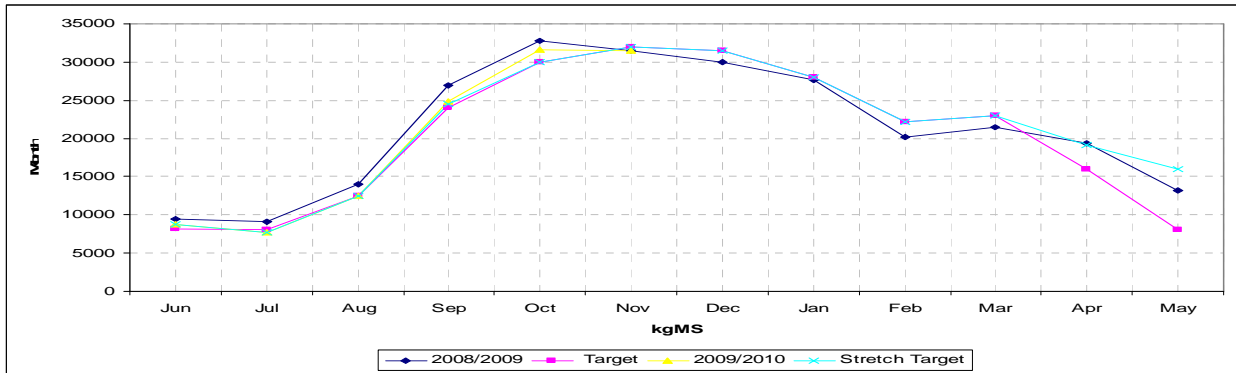
## Taratahi Dairy Unit

<b>Farm Data 20 November 2009</b>	Target	10/11/2009	20/11/2009	30/11/2009
<b>Available Grazing Area</b>	190	185	185	185
<b>Area shut up or cropped</b>	0	33	33	33
<b>Total Effective area</b>	190	208	208	208
<b>Total Cows milked into Vat</b>				
<i>Twice a Day</i>		605	603	603
<i>Once a day</i>				
<b>Treatment mob total</b>		21	12	12
<i>Mastitis, Lamé, Colostrum, other</i>		2,18,1,0	4,8,0,0	4,8,0,0
<b>Springers on farm</b>		-		-
<b>Dry cows on farm</b>		2	3	3
<b>R2's on farm</b>		33	33	33
<b>R1's on farm</b>		30	30	30
<b>Other on farm</b>				
<b>Total Cows on Farm</b>		628	618	618
<b>Dry cows off farm</b>				
<b>R2's off farm</b>				
<b>R1's off farm</b>		159	159	159
<b>Other off farm</b>				
<b>Total Cows off Farm</b>		0	0	0
<b>Culls over period</b>		10		
<b>Culls to date</b>		149	149	149
<b>Deaths over period</b>		1		
<b>Deaths to date</b>		12	12	12
<b>Total Stock Numbers</b>		621	618	618
<b>Peak cow numbers</b>	615 target			
<b>Condition Score</b>	4.5 (PSM)			
<b>Kgs N applied (for period)</b>		1389	3459	1578
<b>Kgs N applied/ha to date (Total Eff)</b>		87	95	104
<b>Rainfall over period (mm)</b>		2	38.5	0
<b>Rainfall year to date (1 June)</b>		416.5	455	455

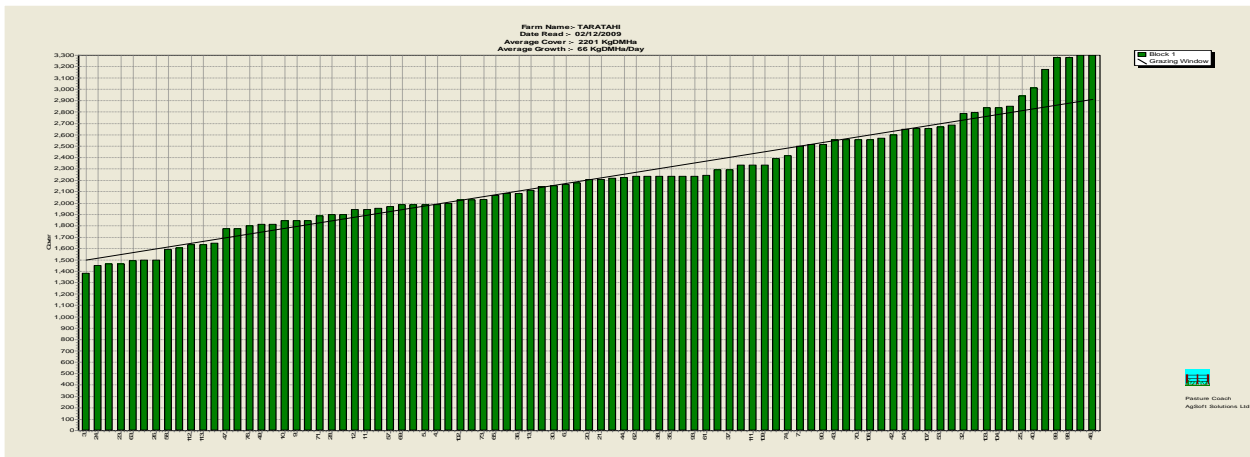
<b>Farm Production</b>	Target	10/11/2009	20/11/2009	30/11/2009
<b>kgMS/day (av for period)</b>		1058	1034	1054
<b>kgMS/cow/day</b>	1.77	1.75	1.71	1.74
<b>kgMS/ha/day (Total ha)</b>	5.12	5.08	4.97	5.06
<b>SCC (10 day average)</b>	<150	189	198	168



	Target	10/11/2009	20/11/2009	30/11/2009
<b>KgMs/cow to date (615 Target Peak cow)</b>		156.13	172.93	190.10
<b>kgMS/ha to date (190ha)</b>		505	559	615
<b>KgMs for Month</b>	32000	10579	22016	31489
<b>KgMs for season to date</b>		96004	106355	116913
<b>kgMS target for season to date</b>		93406	104680	114740
<b>Season to date v's target</b>		+3%	+2%	+2%
<b>Fertility (6wk non return rate)</b>				62%



	Target	10/11/2009	20/11/2009	30/11/2009
<b>Growth Rate</b>	35	43	60	68
<b>Pasture Cover Actual</b>	2100	1996	1991	2201
<b>Area Grazed /ha/day</b>		8	7	7
<b>Pasture Residual</b>	1500	1550	1550	1550
<b>Rotation Speed</b>	120	21	26	26



	Target	10/11/2009	20/11/2009	30/11/2009
<b>Total Feed Ration (Milkers)</b>	16	16	16	16
<b>Pasture</b>	16	16	16	16
<b>Grass Silage</b>				
<b>Baleage</b>				
<b>Maize Silage</b>				
<b>Other</b>				

<b>Total Feed Ration (Drys)</b>		N/A	N/A	N/A
<b>Pasture</b>				
<b>Grass Silage</b>				
<b>Baleage</b>				
<b>Maize Silage</b>				
<b>Other</b>				

<b>Total Feed Ration (Springers)</b>		N/A	N/A	N/A
<b>Pasture</b>				
<b>Grass Silage</b>				
<b>Baleage</b>				
<b>Maize Silage</b>				
<b>Other</b>				

<b>Total Supplement on hand (kgDM)</b>		243,027	243,027	243,027
<b>Grass Silage</b>		83,542	83,542 + 30ha silage	83,542 + 30ha silage
<b>Baleage</b>		7,200 + 438 bales	7,200 + 438 bales	7,200 + 438 bales
<b>Maize Silage</b>		240,000	240,000	240,000
<b>Hay</b>		10,125	10,125	10,125
<b>Straw</b>		2,160	2,160	2,160
<b>Other (Hay conv)</b>		230 bales	230 bales	230 bales
<b>Other (Straw conv)</b>				

<b>Total Supplement at Run off. (kgDM)</b>	N/A	N/A	N/A	N/A
<b>Grass Silage</b>				
<b>Baleage</b>				
<b>Maize Silage</b>				
<b>Hay</b>				
<b>Straw</b>				
<b>Other</b>				
<b>Other</b>				