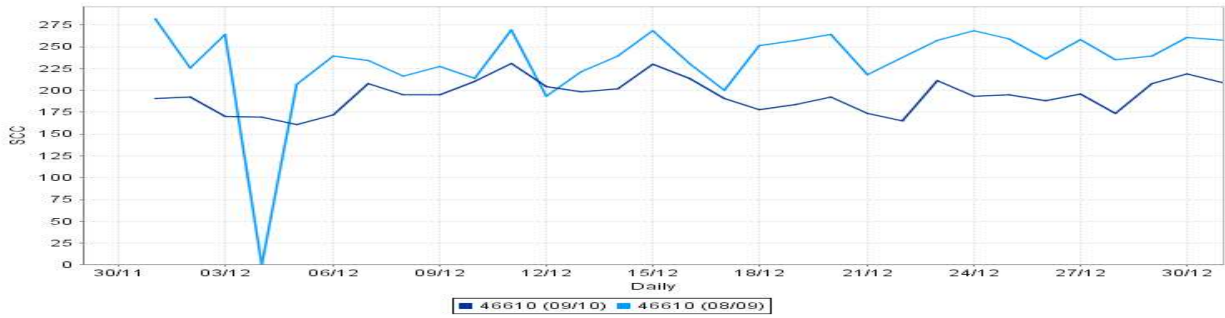


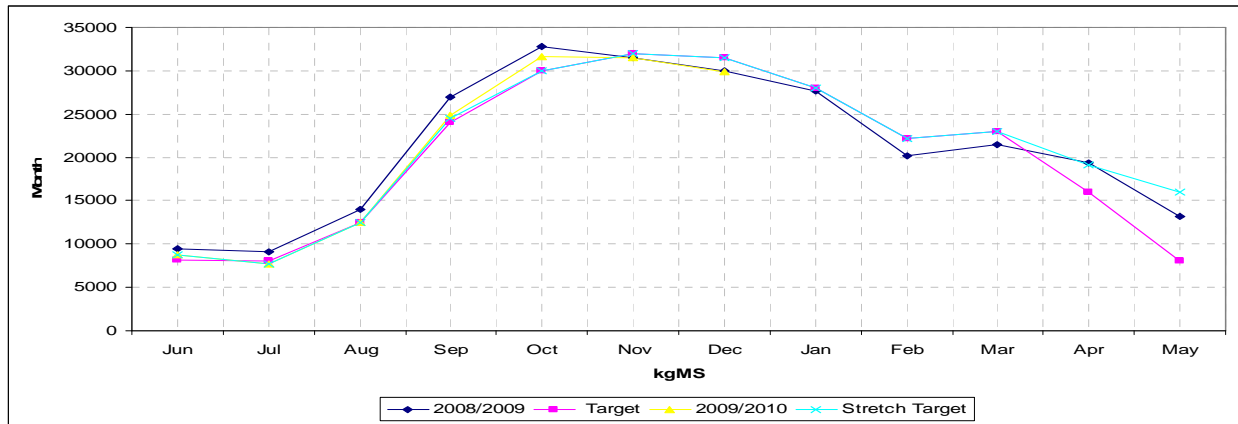
Taratahi Dairy Unit

Farm Data 10 December 2009	Target	10/12/2009	20/12/2009	31/12/2009
Available Grazing Area	190	185	185	185
Area shut up or cropped	0	33	33	33
Total Effective area	190	208	208	208
Total Cows milked into Vat				
<i>Twice a Day</i>		600	601	601
<i>Once a day</i>				
Treatment mob total		18	12	12
<i>Mastitis, Lamé, Colostrum, other</i>		4,14,0,0	12,0,0,0	12,18,0,0
Springers on farm		-		
Dry cows on farm			3	3
R2's on farm		33	33	33
R1's on farm		30	30	30
Other on farm (Bulls etc)			20	20
Total Cows on Farm		618	616	616
Dry cows off farm				
R2's off farm				
R1's off farm		159	159	159
Other off farm				
Total Cows off Farm		0	0	0
Culls over period				
Culls to date		149	149	149
Deaths over period			2	
Deaths to date		12	14	14
Total Stock Numbers		618	616	116
Peak cow numbers	615 target			
Condition Score	4.5 (PSM)			
Kgs N applied (for period)		4244	4016	2050
Kgs N applied/ha to date (Total Eff)		114	124	128
Rainfall over period (mm)		0	10	12
Rainfall year to date (1 June)		455	465	477

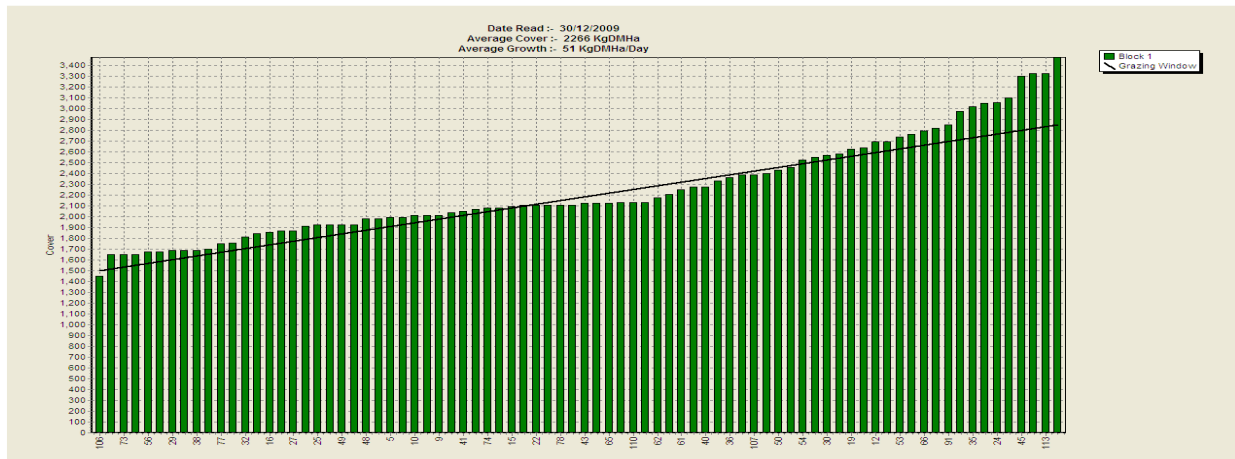
Farm Production	Target	10/12/2009	20/12/2009	31/12/2009
kgMS/day (av for period)		995	982	921
kgMS/cow/day	1.77	1.65	1.63	1.53
kgMS/ha/day (Total ha)	5.12	4.78	4.72	4.42
SCC (10 day average)	<150	186	203	194



	Target	10/12/2009	20/12/2009	31/12/2009
KgMs/cow to date (615 Target Peak cow)		203.07	222.24	238.68
kgMS/ha to date (190ha)		657.33	719.38	772.58
KgMs for Month		9956	19778	29887
KgMs for season to date		124894	136683	146792
kgMS target for season to date		124740	135316	146812
Season to date v's target		+1%	+1%	0%
Fertility (6wk non return rate)				



	Target	10/12/2009	20/12/2009	31/12/2009
Growth Rate	60	64	68	51
Pasture Cover Actual	2200	2310	2427	2266
Area Grazed /ha/day		7	7	7
Pasture Residual	1500	1550	1550	1550
Rotation Speed	26	26	26	26



	Target	10/12/2009	20/12/2009	31/12/2009
Total Feed Ration (Milkers)	16	16	16	16
Pasture	16	16	16	16
Grass Silage				
Baleage				
Maize Silage				
Other				

Total Feed Ration (Drys)		N/A	N/A	N/A
Pasture				
Grass Silage				
Baleage				
Maize Silage				
Other				

Total Feed Ration (Springers)		N/A	N/A	N/A
Pasture				
Grass Silage				
Baleage				
Maize Silage				
Other				

Total Supplement on hand (kgDM)		243,027	243,027	243,027
Grass Silage		83,542 + 30ha silage	83,542 + 30ha silage	83,542 + 30ha silage
Baleage		7,200 + 438 bales	7,200 + 438 bales	7,200 + 438 bales
Maize Silage		240,000	240,000	240,000
Hay		10,125	10,125	10,125
Straw		2,160	2,160	2,160
Other (Hay conv)		230 bales	230 bales	230 bales
Other (Straw conv)				

Total Supplement at Run off. (kgDM)	N/A	N/A	N/A	N/A
Grass Silage				
Baleage				
Maize Silage				
Hay				
Straw				
Other				
Other				