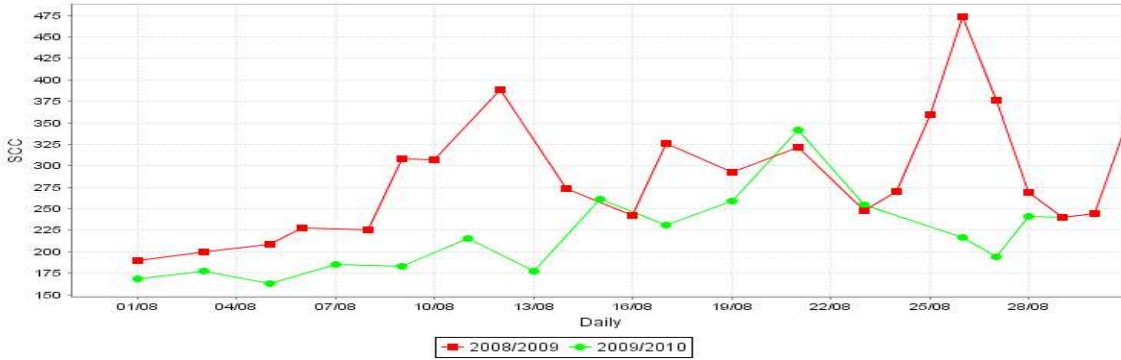


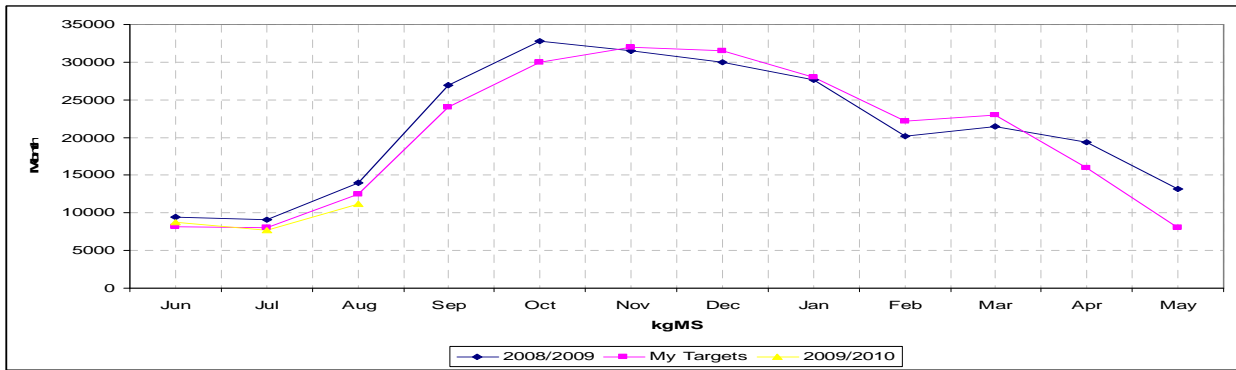
Taratahi Dairy Unit

Farm Data August 2009	Target	10/08/2009	20/08/2009	30/08/2009
Available Grazing Area	190	171.4	175.7	171.7
Area shut up or cropped	0	18.6	14.3	18.3
Total Effective area	190	190	190	190
Total Cows milked into Vat		200	298	398
<i>Twice a Day</i>		200	298	398
<i>Once a day</i>				
Treatment mob total		32	45	38
<i>Mastitis, Lamé, Colostrum, other</i>		12,0,19,1	10,0,35,0	19,2,17,0
Springers on farm		90	110	72
Dry cows on farm		149	77	150
R2's on farm		75	29	29
R1's on farm		30	30	30
Other on farm				
Total Cows on Farm		546	559	658
Dry cows off farm		122	100	0
R2's off farm		-	-	-
R1's off farm		159	159	159
Other off farm				
Total Cows off Farm		122	100	0
Culls over period		16	9	0
Culls to date		101	110	110
Deaths over period		1	-	1
Deaths to date		5	5	6
Total Stock Numbers		668	659	658
Peak cow numbers	615 target			
Condition Score	5.0 (PSC)		4.15	
Kgs N applied (for period)		1434	1650	1124
Kgs N applied/ha to date (Total Eff)		33	40	42
Rainfall over period (mm)		11	28.5	
Rainfall to date (mm) 1/6/09		191.5	220	

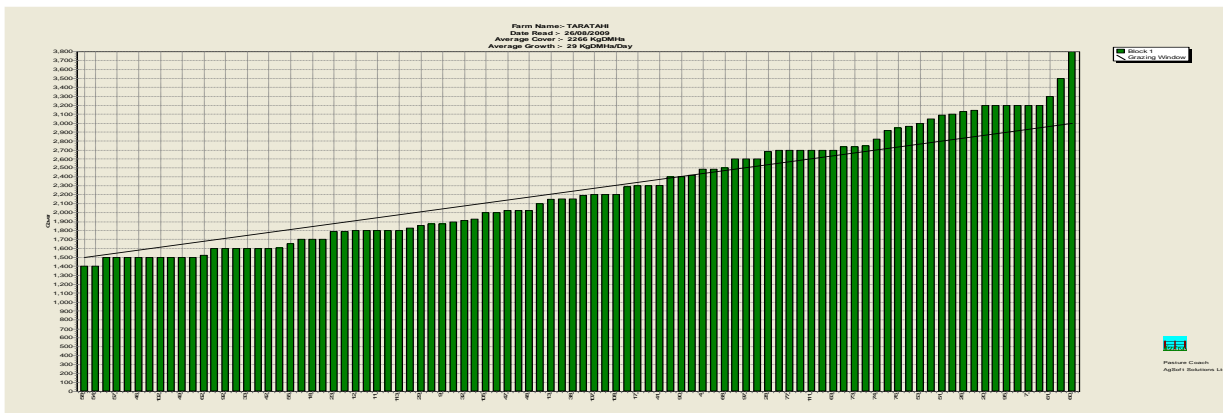
Farm Production	Target	10/08/2009	20/08/2009	30/08/2009
kgMS/day (av for period)		238	342	485
kgMS/cow/day		1.43	1.58	1.66
kgMS/ha/day (Total ha)		1.46	1.80	3.48
SCC (10 day average)		175	229	248



	Target	10/08/2009	20/08/2009	31/08/2009
KgMs/cow to date (615 Target Peak cow)		30.59	36.16	47.01
kgMS/ha to date (190ha)		99.03	117.05	152.17
KgMs for Month	12500			12478
KgMs for season to date		18816	22240	28913
kgMS target for season to date		18654	23591	28700
Season to date v's target		+0%	-6%	+0%
Fertility (3wk submission, 6 wk non-return rate, Incalf rate)				



	Target	10/08/2009	20/08/2009	31/08/2009
Growth Rate	22	19	23	29
Pasture Cover Actual	2200	2337	2344	2266
Area Grazed /ha/day		1.4	3.8	4.3
Pasture Residual	1600	1500	1600	1600
Rotation Speed	120	135	50	39



	Target	10/08/2009	20/08/2009	30/08/2009
Total Feed Ration (Milkers)	16	15.5	16	16
Pasture	12	11.5	14	16
Grass Silage				
Baleage				
Maize Silage	4	4	2	
Other				

Total Feed Ration (Drys)	12	12	11.8	4
Pasture	6	6	5	8
Grass Silage	5	5	6.8	4
Baleage				
Maize Silage				
Other				

Total Feed Ration (Springers)	10	11	11.2	11
Pasture	5	5	5	7
Grass Silage	5	6	5.2	4
Baleage				
Maize Silage				
Other			1 (hay)	

Total Supplement on hand (kgDM)			302,285	292,302
Grass Silage			150,000	140,017
Baleage				
Maize Silage			140,000	140,000
Hay			10,125	10,125
Straw			2,160	2,160
Other (Hay conv)			250 bales	250 bales
Other (Straw conv)			300 bales	300 bales

Total Supplement at Run off. (kgDM)	N/A	N/A	N/A	N/A
Grass Silage				
Baleage				
Maize Silage				
Hay				
Straw				
Other				
Other				