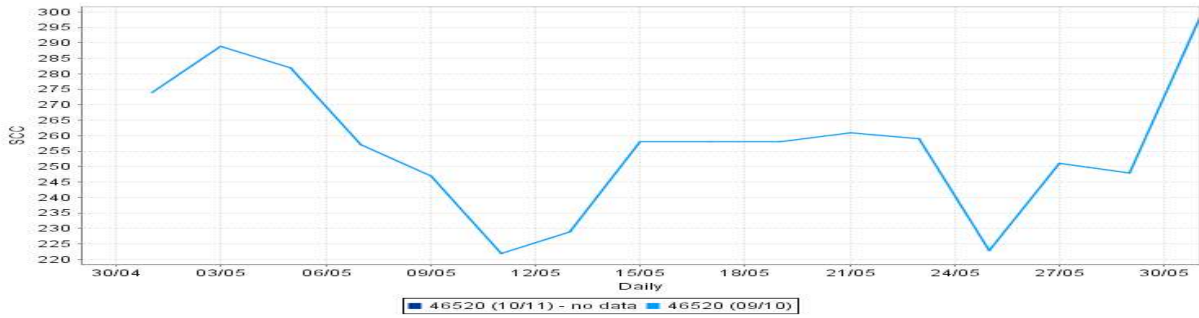


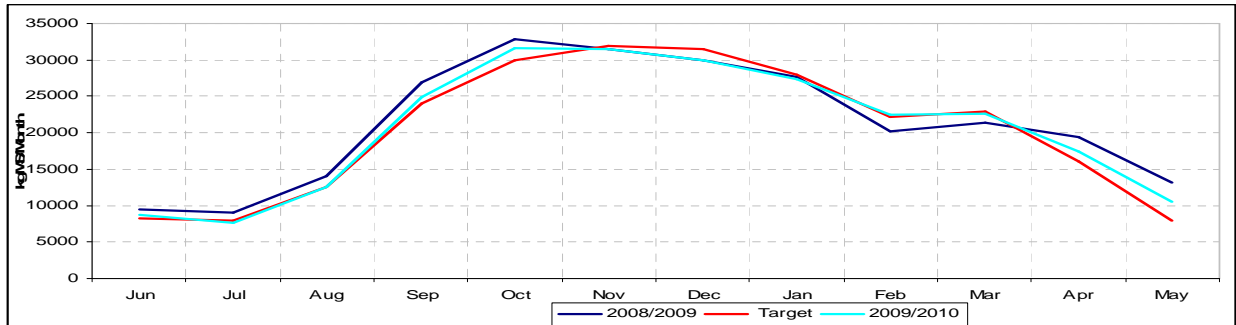
## Taratahi Dairy Unit

<b>Farm Data 31 May 2010</b>	Target	10/05/2010	20/05/2010	31/05/2010
<b>Available Grazing Area</b>	190	174	174	174
<b>Area shut up or cropped</b>	0	34	34	34
<b>Total Effective area</b>	190	208	208	208
<b>Total Cows milked into Vat</b>		466	383	0
<i>Twice a Day</i>				
<i>Once a day</i>		466	383	
<b>Treatment mob total</b>		1		
<i>Mastitis, Lamé, Colostrum, other</i>		0,1,0,0	0,0,0,0	0,0,0,0
<b>Springers on farm</b>				
<b>Dry cows on farm</b>		143	225	106
<b>R2's on farm</b>		33	33	33
<b>R1's on farm</b>		30	30	30
<b>Other on farm (Bulls etc)</b>		38	38	38
<b>Total Cows on Farm</b>		608	609	609
<b>Dry cows off farm</b>				
<b>R2's off farm</b>				
<b>R1's off farm</b>				
<b>Other off farm</b>				
<b>Total Cows off Farm</b>				
<b>Culls over period</b>				
<b>Culls to date</b>		154	154	154
<b>Deaths over period</b>		1		
<b>Deaths to date</b>		16	16	16
<b>Total Stock Numbers</b>		609	609	609
<b>Peak cow numbers</b>	615			
<b>Condition Score</b>	4.5	4.16		
<b>Kgs N applied (for period)</b>			748	
<b>Kgs N applied/ha to date (Total Eff)</b>		174	178	178
<b>Rainfall over period (mm)</b>		9	13.5	110
<b>Rainfall year to date (1 June)</b>		1014.75	1028.25	1138.25

<b>Farm Production</b>	Target	10/05/2010	20/05/2010	31/05/2010
<b>kgMS/day (av for period)</b>		426	410	226
<b>kgMS/cow/day</b>	1.1	0.91	1.07	1.03
<b>kgMS/ha/day (Total ha)</b>	2.0	2.04	1.97	1.08
<b>SCC (10 day average)</b>	<150	412	424	392



	Target	10/05/2010	20/05/2010	30/05/2010
<b>KgMs/cow to date (615 Target Peak cow)</b>		391.28	397.95	401.67
<b>kgMS/ha to date (190ha)</b>		1266.51	1288.10	1300
<b>KgMs for Month</b>		4236	8338	10600
<b>KgMs for season to date</b>		240638	244740	247007
<b>kgMS target for season to date</b>		241061	244781	247669
<b>Season to date v's target</b>		-1%	0%	0%
<b>Fertility (incalf rate)</b>	95%			



	Target	10/05/2010	20/05/2010	31/05/2010
<b>Growth Rate</b>	45	36	24	23
<b>Pasture Cover Actual</b>	2200	1992	1949	1951
<b>Area Grazed /ha/day</b>		4.5	4.0	2.1
<b>Pasture Residual</b>	1500	1550	1550	1550
<b>Rotation Speed</b>	50	42	47.5	82

	Target	10/05/2010	20/05/2010	31/05/2010
<b>Total Feed Ration (Milkers Herd 1)</b>	16	16	16	16
<b>Pasture</b>	16	8	8	8
<b>Grass Silage</b>		4	4	4
<b>Baleage</b>				
<b>Maize Silage</b>		4	4	4
<b>Other</b>				

	Target	10/05/2010	20/05/2010	31/05/2010
<b>Total Feed Ration (Milkers Herd 2)</b>	16	16	16	16
<b>Pasture</b>	16	8	8	8
<b>Grass Silage</b>		4	4	4
<b>Baleage</b>				
<b>Maize Silage</b>		4	4	4

<b>Other</b>				
--------------	--	--	--	--

<b>Total Feed Ration (Drys)</b>		N/A	N/A	N/A
<b>Pasture</b>				
<b>Grass Silage</b>				
<b>Baleage</b>				
<b>Maize Silage</b>				
<b>Other</b>				

<b>Total Feed Ration (Springers)</b>		N/A	N/A	N/A
<b>Pasture</b>				
<b>Grass Silage</b>				
<b>Baleage</b>				
<b>Maize Silage</b>				
<b>Other</b>				

<b>Total Supplement on hand (kgDM)</b>				
<b>Grass Silage</b>		32,742 + 105,000	32,742+ 80,500	14,042+ 80,500
<b>Baleage</b>		7,200 + 430 bales	7,200+ 414 bales	7,200+ 398 bales
<b>Maize Silage</b>		75,900+ 100,243	75,900+ 75,743	24,854 75,743
<b>Hay</b>		10,125	10,125	10,125
<b>Straw</b>		2,160	2,160	2,160
<b>Other (Hay conv)</b>		230 bales	230 bales	230 bales
<b>Other (Straw conv)</b>				

<b>Total Supplement at Run off. (kgDM)</b>	N/A	N/A	N/A	N/A
<b>Grass Silage</b>				
<b>Baleage</b>				
<b>Maize Silage</b>				
<b>Hay - rounds</b>		200 bales	175 bales	150 bales
<b>Straw</b>				
<b>Kale/swede</b>		26ha @3.5t	26ha @ 3.5t	26ha @ 3.5t
<b>Oats</b>		13ha @ 1.5t	13ha @ 1.5t	13ha @ 1.5t